

Broad heading No: NB800M—TuC

NB800M.00
HHF-800 Drilling pump

Parts list



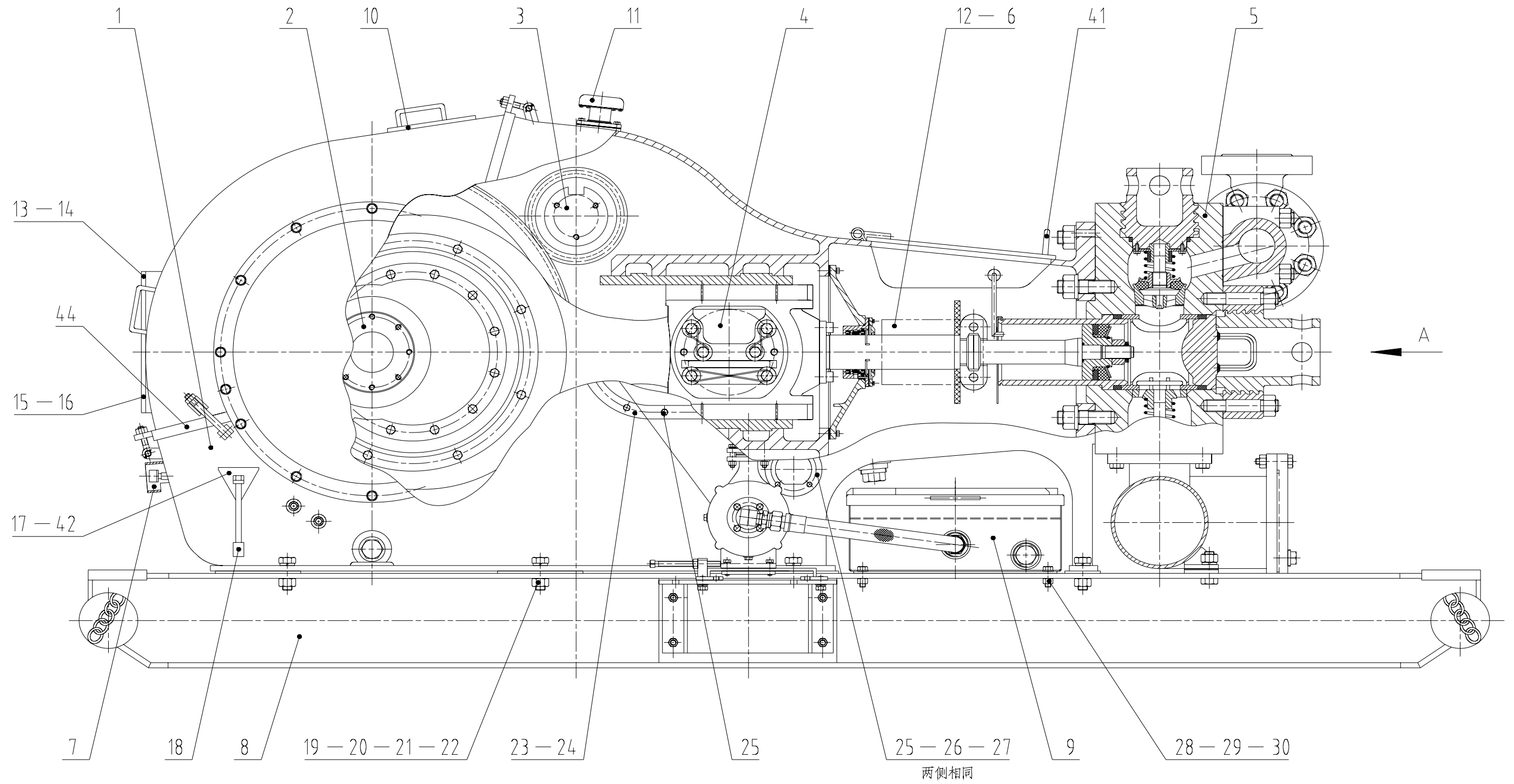
Sichuan Honghua Petroleum Equipment Co., Ltd
September, 2007

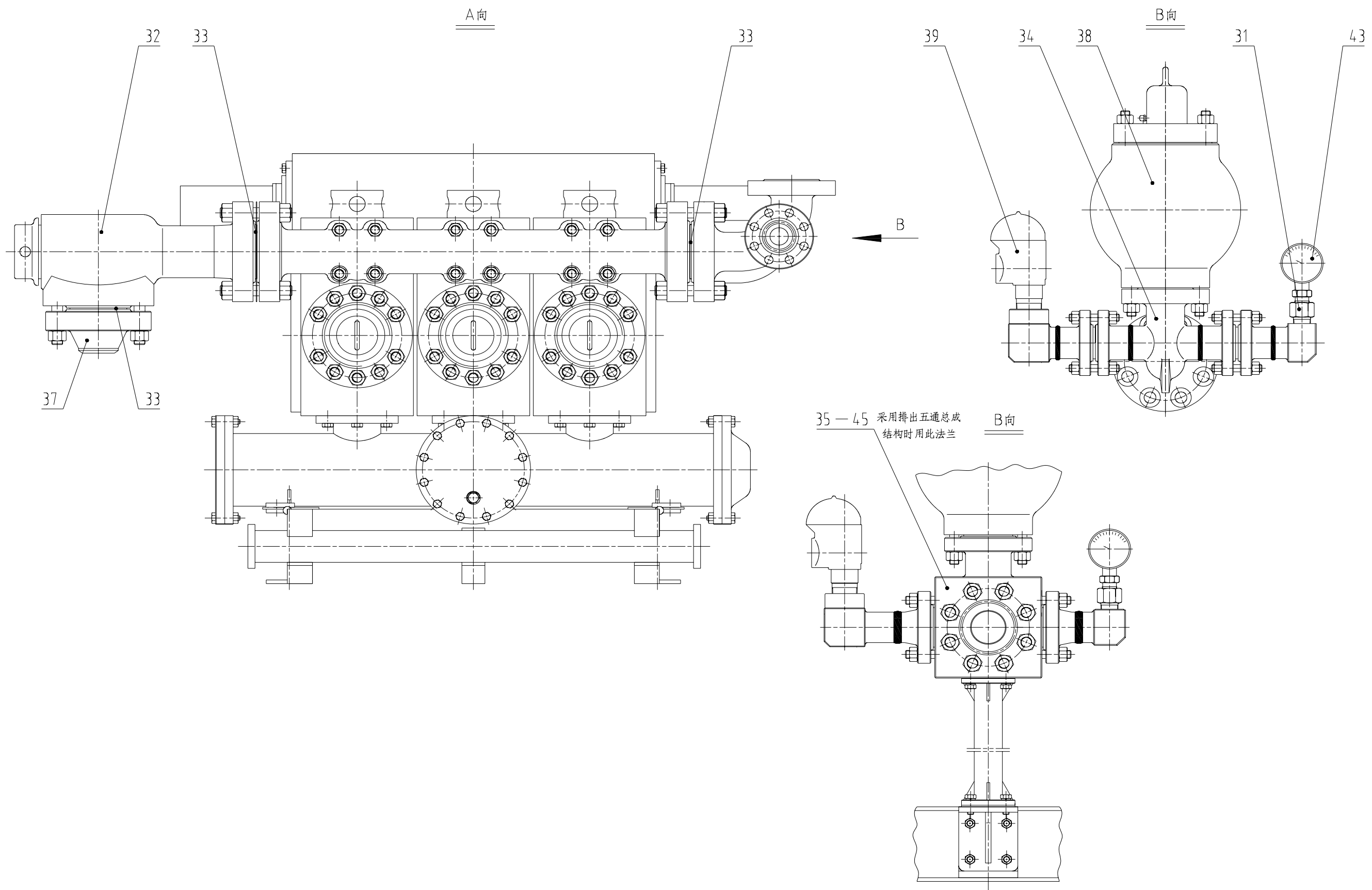
CONTENT

一、	NB800M.00 HHF-800 General drawing of drilling pump”-----	2
二、	Parts drawings of drilling pump-----	6
1、	NB800M.01.00 Frame assembly-----	6
2、	NB800M.02.00 Crankshaft assembly-----	8
3、	NB800M.03.00 Pinion shaft assembly-----	10
4、	NB800M.04.00 Crosshead assembly-----	12
5、	NB800M.05.00 Fluid end assembly-----	14
6、	NB800M.06.00 Power end lubrication assembly-----	17
7、	NB800M.08.00 Spray pump assembly-----	20
8、	NB800M.10.00 Breather cap-----	22
9、	NB800M.15.00 Oil level gauge-----	23
10、	NB800M.19.00 Clean out cover-----	24
11、	NB800M.22.00 Draining filter assembly-----	25
12、	NB800M.24.00 Elbow assembly-----	26
13、	NB800M.24.00A Discharge five-way pipe -----	27
14、	NB800M.27.00 KB-45Pulsation damper-----	29
15、	NB800M.28.00 JA-3Shear pin Relieve valve-----	31

一、NB800M.00 HHF-800 General drawing of drilling pump

NB800M.00 HHF-800 drilling pump



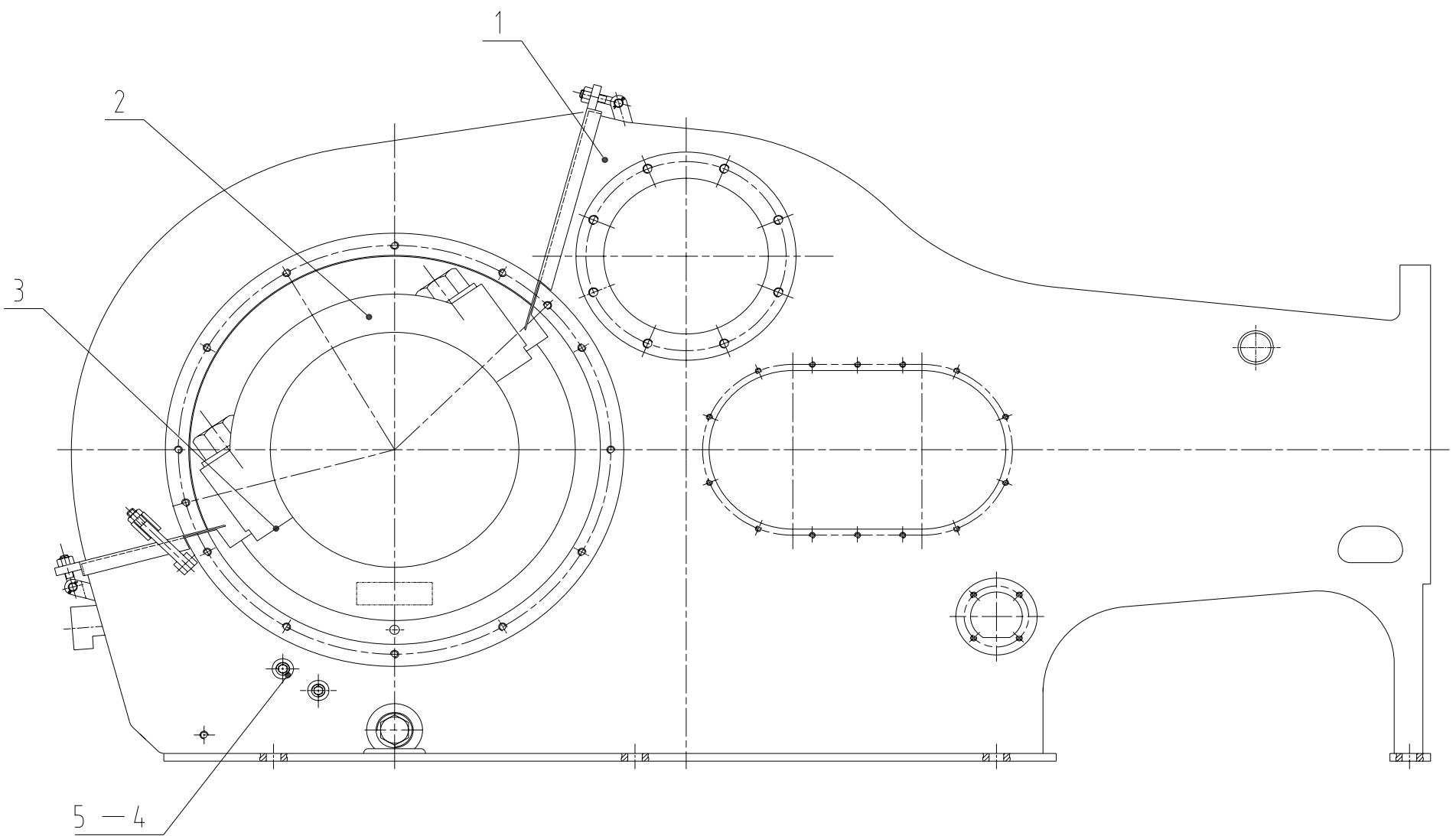
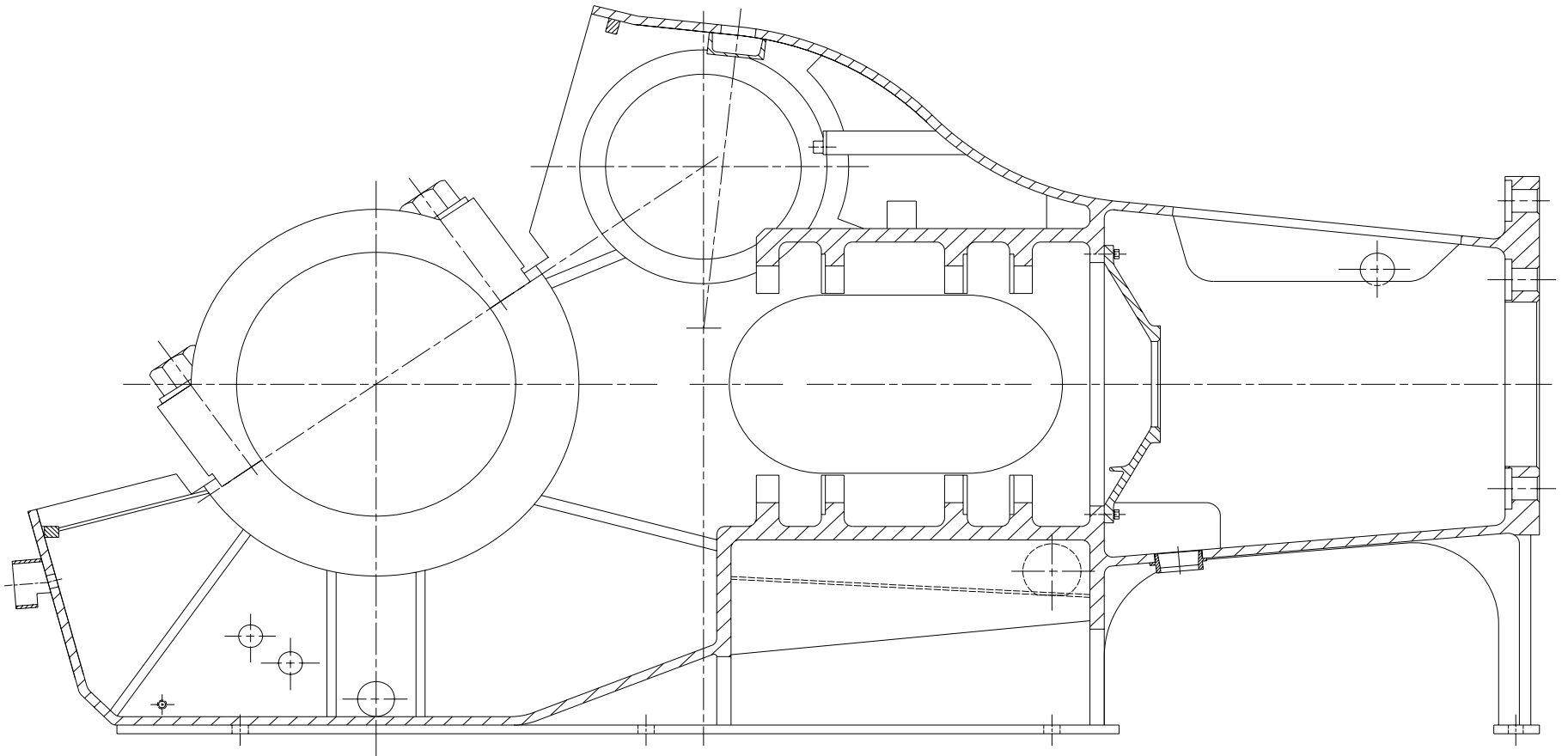


S.N	Drawing No.	Item	Qty.
1	NB800M.01.00	Frame assembly	1
2	NB800M.02.00	Crankshaft assembly	1
3	NB800M.03.00	Pinion shaft assembly	1
4	NB800M.04.00	Crosshead assembly	3
5	NB800M.05.00	Fluid end assembly	1
6	ANSI/ASMEB18.6.3-2003	Screw: 8 (0.164) -32×1/2	8
7	NB800M.06.00	Power end lubrication assembly	1
8	NB800M.07.00	Skid	1
9	NB800M.08.00	spray pump assembly	1
10	NB800M.09	Seal gasket	2
11	NB800M.10.00	Breather cap	1
12	NB800M.11	Nameplate	2
13	NB800M.12.00	Cover plate assembly	1
14	ANSI/ASMEB18.2.1-1996	Bolt: 1/2-13×1 1/4	14
15	GB/T95-2002	Washer: 14	14
16	NB800M.13	Seal pad	1
17	NB800M.14	Indication plate	2
18	NB800M.15.00	Oil level gauge	2
19	NB800M.16	Adjusting gasket	10
20	ANSI/ASMEB18.2.1-1996	Bolt: 1-8×3 1/8	10
21	GB/T93-1987	Washer: 27	10
22	ANSI/ASMEB18.2.2-1987 (R1999)	Nut: 1-8	10
23	NB800M.17	Cover, crosshead hole	2
24	NB800M.18	Seal pad	2
25	ANSI/ASMEB18.2.1-1996	Bolt: 1/2-13×1 3/8	36
26	NB800M.19.00	Clean out cover	2
27	NB800M.20	Seal gasket	2
28	ANSI/ASMEB18.2.1-1996	Bolt: 5/8-11×2	4
29	GB/T95-2002	Washer: 16	4
30	ANSI/ASMEB18.2.2-1987 (R1999)	Nut: 5/8-11	4
31	NB800M.21	Screw plug: Rz1 1/2	1
32	NB800M.22.00	Draining filter assembly	1
33	NB800M.23	Ring gasket: R44	3
34	NB800M.24.00	Elbow assembly	1
35	NB800M.24.00A	Discharge five-way pipe assembly	1

36	NB800M.25.00	Special tools	1
37	NB800M.26	Flange: 5 1/8×35	1
38	NB800M.27.00	KB-45 Pulsation dampener	1
39	NB800M.28.00	JA-3 Shear pin relieve valve	1
40	NB800M.29.00	Spare parts delivered with pump	1
41	NB800M.30.00	Cover plates assembly	1
42	GB/T827-1986	Rivet: 3×10	6
43	YK-150	Dual scale shock-proof pressure gauge: 0~40MPa (0~5800psi)	1
44		Rubber: 30×10×4880	1
45	NB800M.31	Blind flange: 5 1/8×35	1

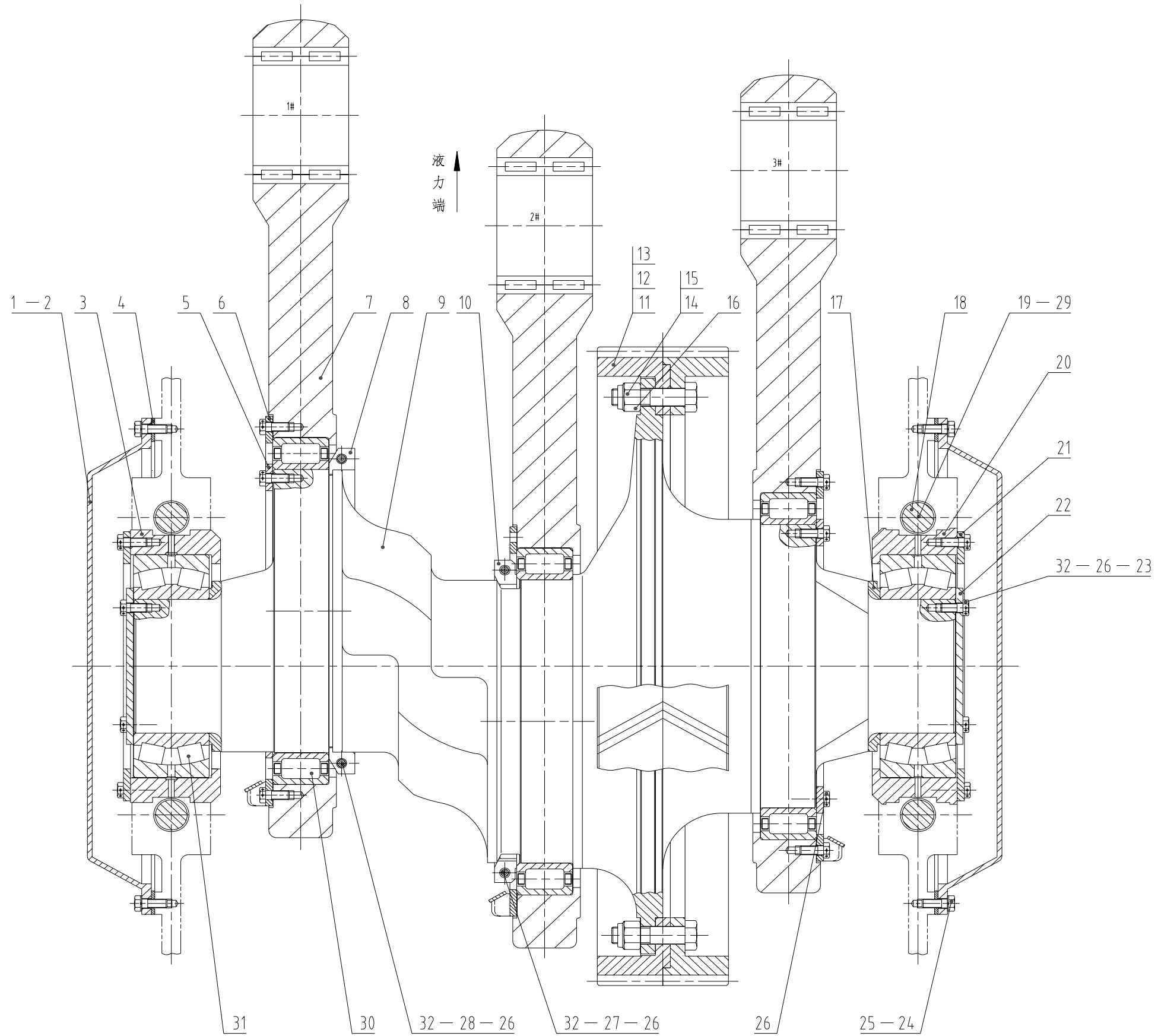
二、 Parts drawings of drilling pump

1、 NB800M.01.00 Frame assembly



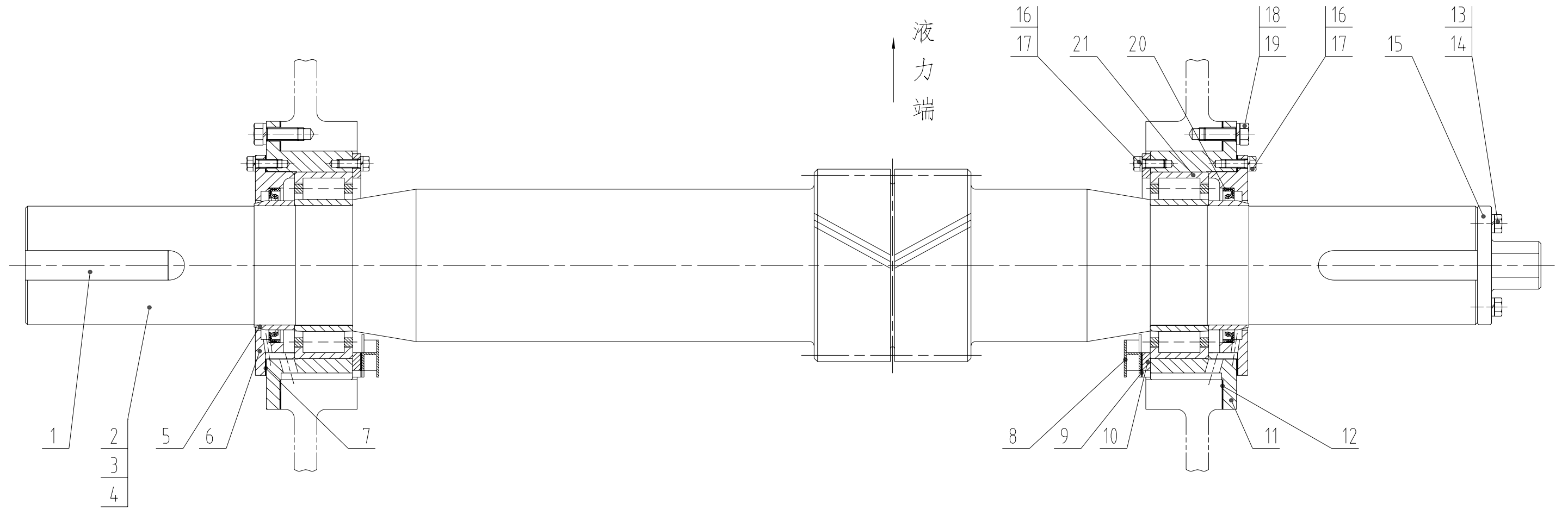
S.N	Drawing No.	Item	Qty.
1	NB800M.01.01.00	Frame	1
2	NB800M.01.02	Main bearing cover	2
3	NB800M.01.03	Shim set	4
4	NB800M.01.04	Connector: NPT3/4-NPT3/4	4
5	NB800M.01.05	Screw plug: NPT3/4	4

2、 NB800M.02.00 Crankshaft assembly



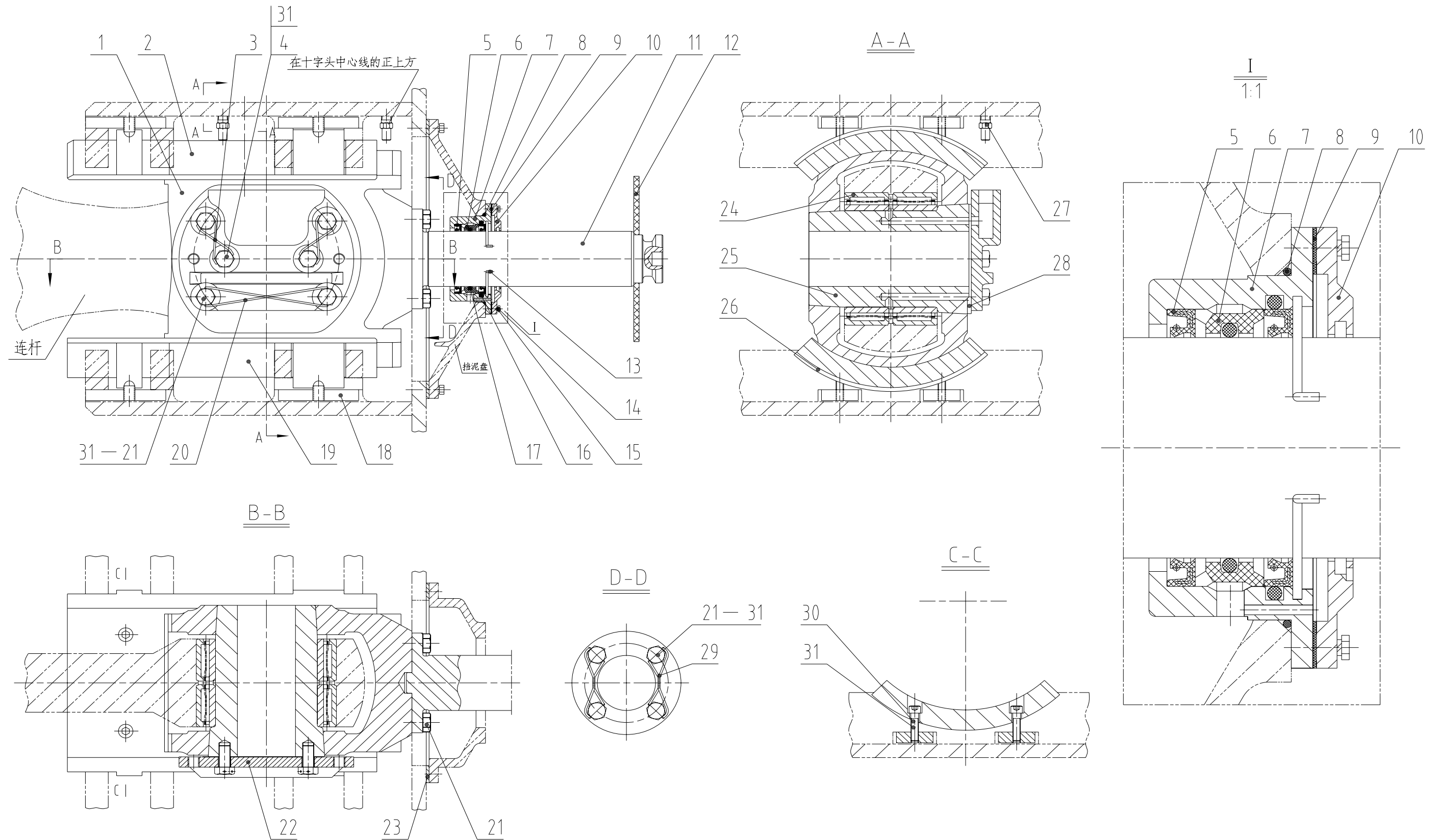
S.N	Drawing no.	Item	Qty
1	NB800M.02.01.00	Cover, main bearing	2
2	NB800M.02.01A.00	Cover, main bearing	1
3	NB800M.02.02	Sleeve, main bearing (right)	1
4	NB800M.02.03	Seal gasket	2
5	NB800M.02.04	Insider retainer	2
6	NB800M.02.05.00	Outside retainer	3
7	NB800M.02.06	rod	3
8	NB800M.02.07	Locating ring (I)	1
9	NB800M.02.08.00	Crankshaft	1
10	NB800M.02.09	Locating ring (II)	1
11	NB800M.02.10.00	Bull gear	1
12	NB800M.02.10A	Bull gear (hobbing)	1
13	NB800M.02.10B	Bull gear (gear grinding)	1
14	NB800M.02.11	bolt: 1 1/8-8UN-2A×125	12
15	NB800M.02.11A	bolt: 1 1/8-8UN-2A×100	12
16	NB800M.02.12.00	Locking nut: 1 1/8-8UN-2B	12
17	NB800M.02.13	spacer ring	2
18	NB800M.02.14	Bolt, main bearing: 2 1/4-8UN-3A	4
19	NB800M.02.15.00	Shim set	4
20	NB800M.02.16	Sleeve, main bearing (left)	1
21	NB800M.02.17	retainer ring	2
22	NB800M.02.18	Baffle plate	2
23	NB800M.02.19	Bolt: 5/8-11×1 1/2	72
24	ANSI/ASMEB18.2.1-1996	Bolt: 5/8-11×1 3/4	28
25	GB/T97.2-1985	Washer: 16	28
26	GB/T343-1994	Locking wire: SZ-1.50	1
27	NB800M.02.20	Bolt: 5/8-11×4 3/4	2
28	NB800M.02.21	Bolt: 5/8-11×4	2
29	GB/T343-1994	Locking wire: SZ-3.00	1
30	NB800M.02.22	Eccentric bearing: NUP 464775 Q4/C9YA4	3
31	NB800M.02.23	Main bearing: 23148/C3W33	2
32	242	anaerobic adhesive for thread locking and sealing	1

3、NB800M.03.00 Pinion shaft assembly



S.N	Drawing no.	Item	Qty
1	NB800M.03.01	Key: 1 3/4×1 3/4×8	1
2	NB800M.03.02	Pinion shaft	1
3	NB800M.03.02A	Pinion shaft (hobbing)	1
4	NB800M.03.02B	Pinion shaft (grinding)	1
5	NB800M.03.03	Scuff Sleeve	2
6	NB800M.03.04	End cover	2
7	NB800M.03.05	Seal gasket	2
8	NB800M.03.06.00	Oil collection box	2
9	NB800M.03.07	Seal gasket	2
10	NB800M.03.08	Baffle plate	2
11	NB800M.03.09	Bearing sleeve	2
12	NB800M.03.10	Seal gasket	2
13	GB/T93-1987	washer: 16	3
14	ANSI/ASME B18.2.1-1996	bolt: 5/8-11×1 3/4	3
15	NB800M.03.11	paring disc pump flange	1
16	ANSI/ASME B18.2.1-1996	bolt: 1/2-13×1 3/8	24
17	GB/T93-1987	washer: 14	24
18	ANSI/ASME B18.2.1-1996	bolt: 3/4-10×2	16
19	GB/T93-1987	washer: 20	16
20	NB800M.03.12	oil seal: 7.625"×9.125"×0.625"	2
21	NB800M.03.13	cylindrical roller bearing : NU3036X2M/C4	2

4、NB800M.04.00 Crosshead assembly

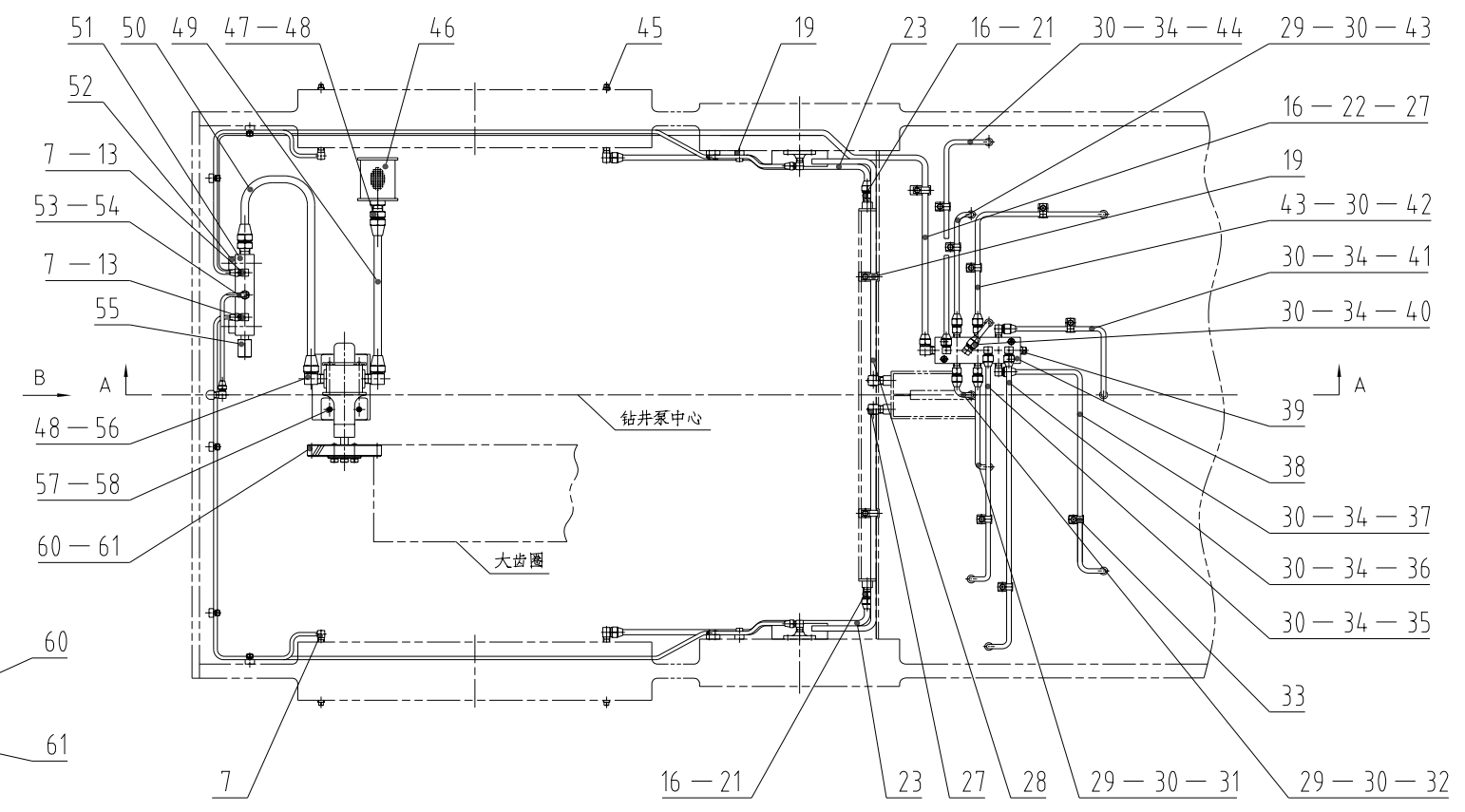
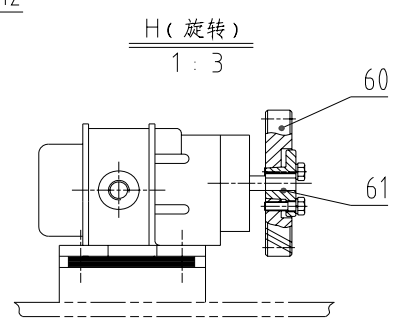
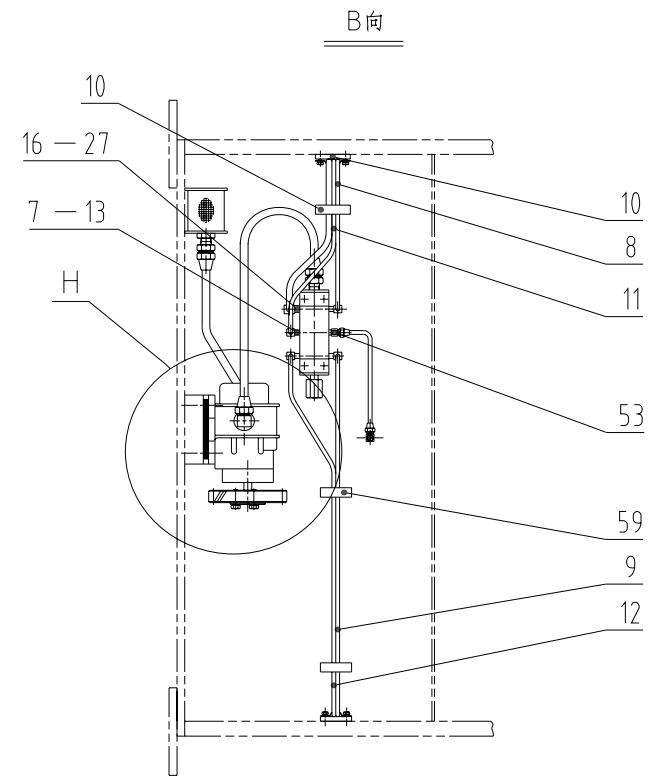


S.N	Drawing no.	Item	Qty.
1	NB800M.04.01	crosshead	1
2	NB800M.04.02	Slide, upper	1
3	GB/T4240-1993	Stainless steel wire: $\phi 1.60$ (L=300)	2
4	NB800M.04.03	bolt: 3/4-10UNC-2A \times 1 1/2	2
5	NB800M.04.04	Double lip oil seal: 4" \times 5" \times 0.5"	2
6	NB800M.04.05	oil seal ring	1
7	NB800M.04.06	stuffing box	1
8	GB/T3452.1-2005	O ring: 160 \times 3.55-G-S	1
9	NB800M.04.07	Seal gasket	1
10	NB800M.04.08	End cover	1
11	NB800M.04.09	rod	1
12	NB800M.04.10	Mud guard plate	1
13	NB800M.04.11	Lock spring	1
14	ANSI/ASME B18.2.1-1996	bolt: 3/8-16 \times 1 3/8	4
15	GB/T93-1987	washer: 10	4
16	GB/T3452.1-2005	O ring: 128 \times 7-G-S	1
17	GB/T3452.1-2005	O ring: 103 \times 5.3-G-S	1
18	NB800M.04.12	Lockup plate	8
19	NB800M.04.13	Slide, lower	1
20	GB/T4240-1993	Stainless steel wire: $\phi 1.60$ (L=500)	1
21	NB800M.04.14	bolt: 3/4-10UNC-2A \times 2	8
22	NB800M.04.15	Crosshead pin baffler	1
23	NB800M.04.16	gasket	1
24	NB800M.04.17	Bearing, crosshead: NNAL 6/177.8-1 Q4/W33XYA2	1
25	NB800M.04.18	Crosshead pin	1
26	NB800M.04.19.00	shim set	8
27	NB800M.04.20	pipe connector: NPT3/8 \times 50.8	2
28	NB800M.04.21	adjusting shim	2
29	GB/T4240-1993	Stainless steel wire: $\phi 1.60$ (L=400)	2
30	ASMEB18.3-2002	bolt: 5/8-11 \times 2	8
31	242	anaerobic adhesive for thread locking and sealing	1

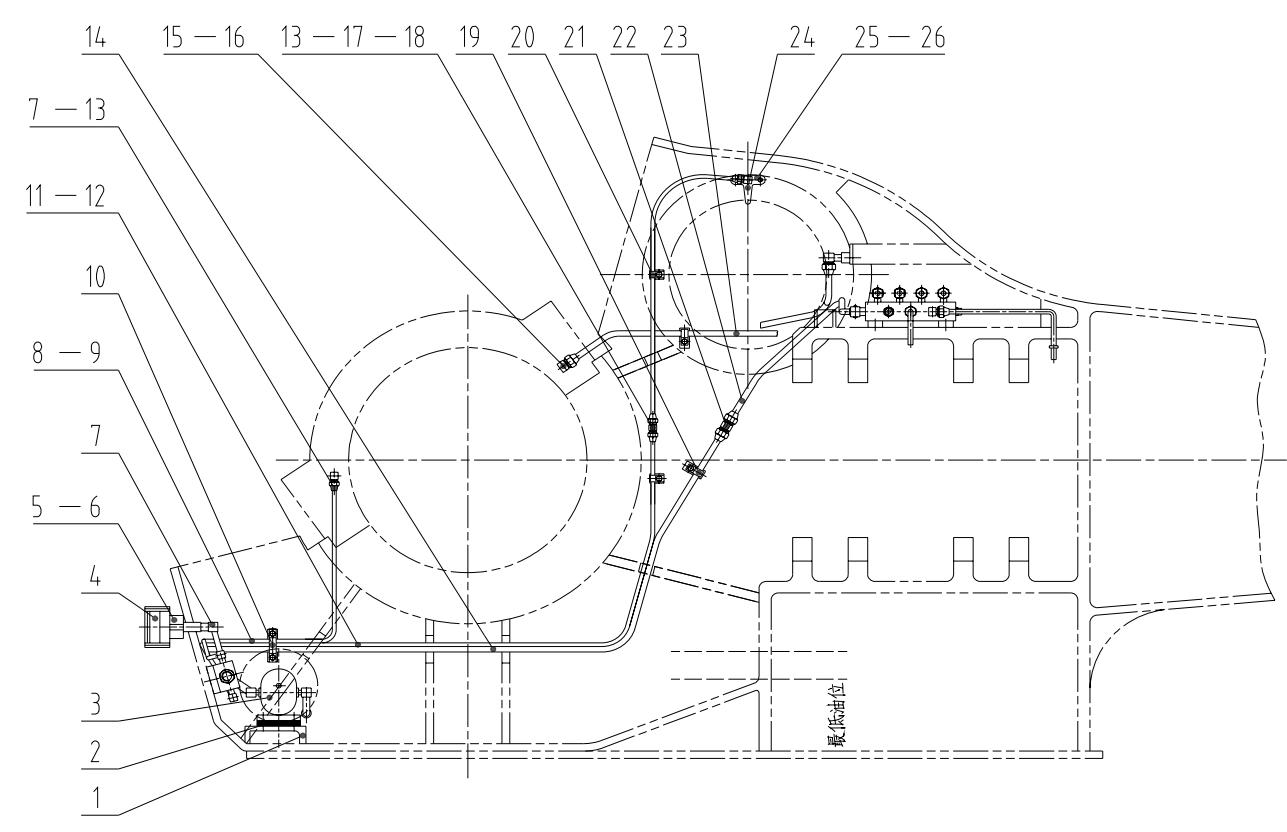
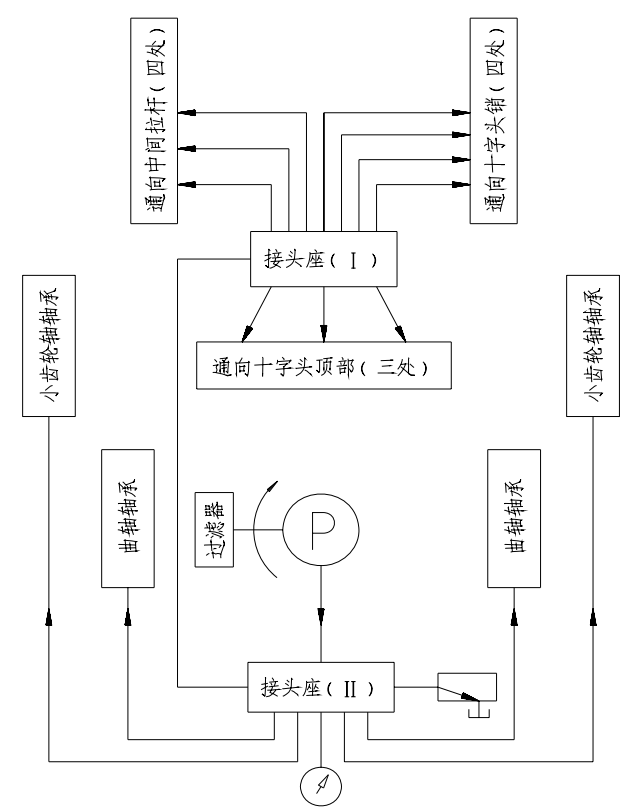
S.N	Drawing no.	Item	Qty.
1	NB800M.05.01.00	Cylinder assembly	3
2	NB800M.05.02	Cylinder cover flange	3
3	NB800M.05.03	Cylinder cover	3
4	NB800M.05.04	seal ring, linear	6
5	NB800M.05.05.00	Cylinder cover plug	3
6	NB800M.05.06	Linear pusher	3
7	GB/T3452.1-2005	O ring: 97.5×3.55-G-S	3
8	NB800M.05.07	discharge outlet cover plate : 5 1/8"	1
9	NB800M.05.08	Discharge pipe	1
10	NB800M.05.01.03	nut: 1 1/2-8UN-2B (SPL)	32
11	NB800M.05.09	Double end bolt : 1 1/2-8UN-2A×262	16
12	NB800M.05.10	Valve cover seal ring	3
13	NB800M.05.11	Valve cover	3
14	NB800M.05.12	valve rod guide apparatus	3
15	NB800M.05.13.00	Spring guide	3
16	NB800M.05.14	Guard plate	3
17	NB800M.05.15	bolt: 3/8-16UNC-2A×20	12
18	GB/T4240-1993	Steel wire: φ1.60 (L=1830)	1
19	NB800M.05.16	Valve spring	6
20	NB800M.05.17.00	Valve assembly	6
21	NB800M.05.18.00	Nut, piston	3
22	NB800M.05.19.00	piston: 5 1/2	3
23	NB800M.05.20	Seal ring, piston	3
24	NB800M.05.21	Piston rod	3
25	NB800M.05.22	double metal cylinder sleeve	3
26	NB800M.05.22A	Cylinder sleeve	3
27	NB800M.05.23.00	Spray pipe assembly	1
28	NB800M.05.24.00	catch hoop assembly	3
29	NB800M.05.25	End cover, cylinder sleeve	3
30	NB800M.05.26	washer: 39	24
31	NB800M.05.27	fixing clip	3
32	NB800M.05.28.00	valve rod guide (lower)	3
33	GB/T3452.1-2005	O RING: 190×7-G-S	3
34	ANSI/ASME B18.2.1-1996	bolt: 7/8-9×1 3/4	18
35	NB800M.05.29.00	Suction pipeline	1

36	NB800M.05.30.00	shim set	2
37	ANSI/ASME B18.2.1-1996	bolt: 7/8-9×3 1/2	36
38	ANSI/ASME B18.2.2-1987 (R1999)	Nut: 7/8-9	36
39	GB/T3452.1-2005	O RING: 290×7-G-S	2
40	NB800M.05.31	Suction flange (I)	1
41	NB800M.05.32	Screw plug: NPT1 1/2	1
42	NB800M.05.33	Blanking plate, suction: 10"	1
43	NB800M.05.34	Suction flange (II)	1
44	NB800M.05.35.00	Suction pulsation dampener	1
45	243	anaerobic adhesive for thread locking and sealing	1

6、NB800M.06.00 Power end lubrication assembly



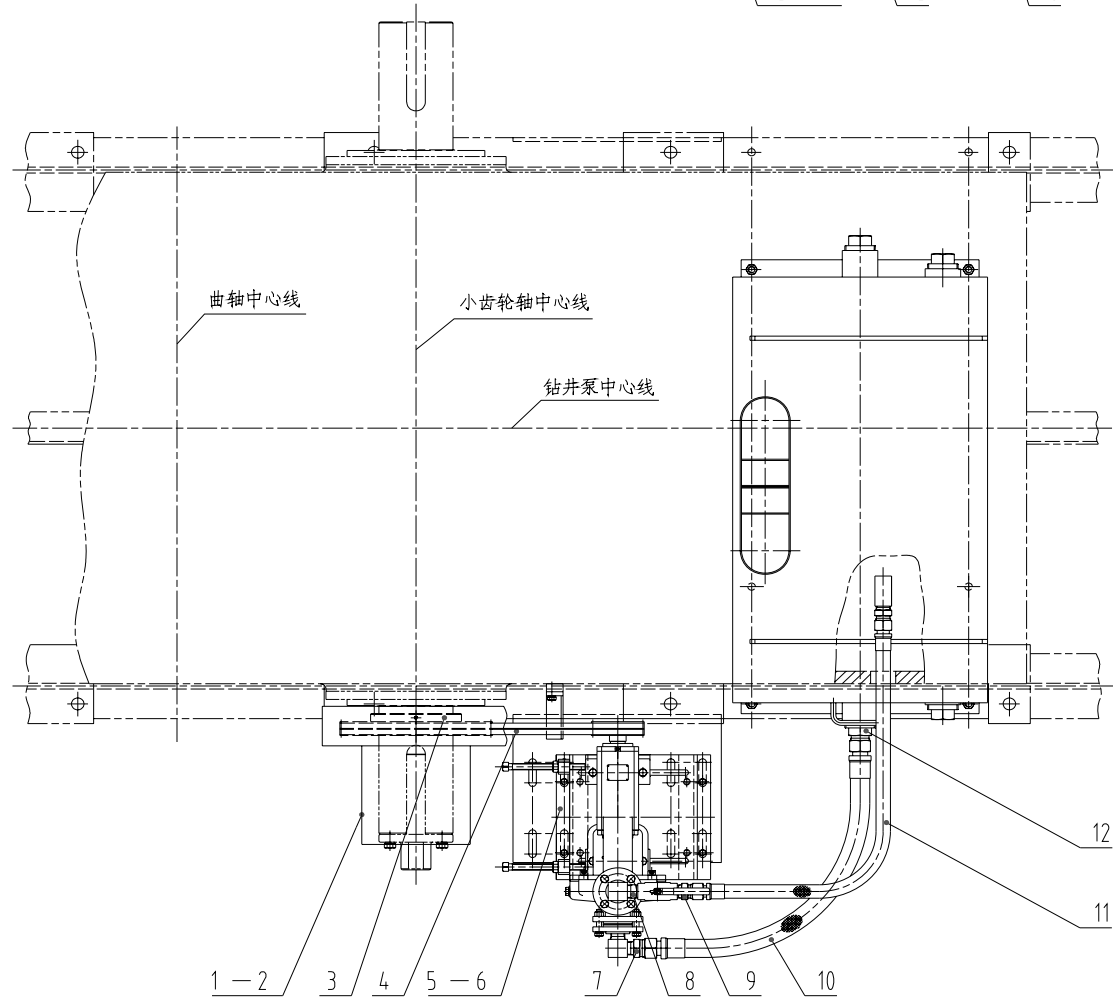
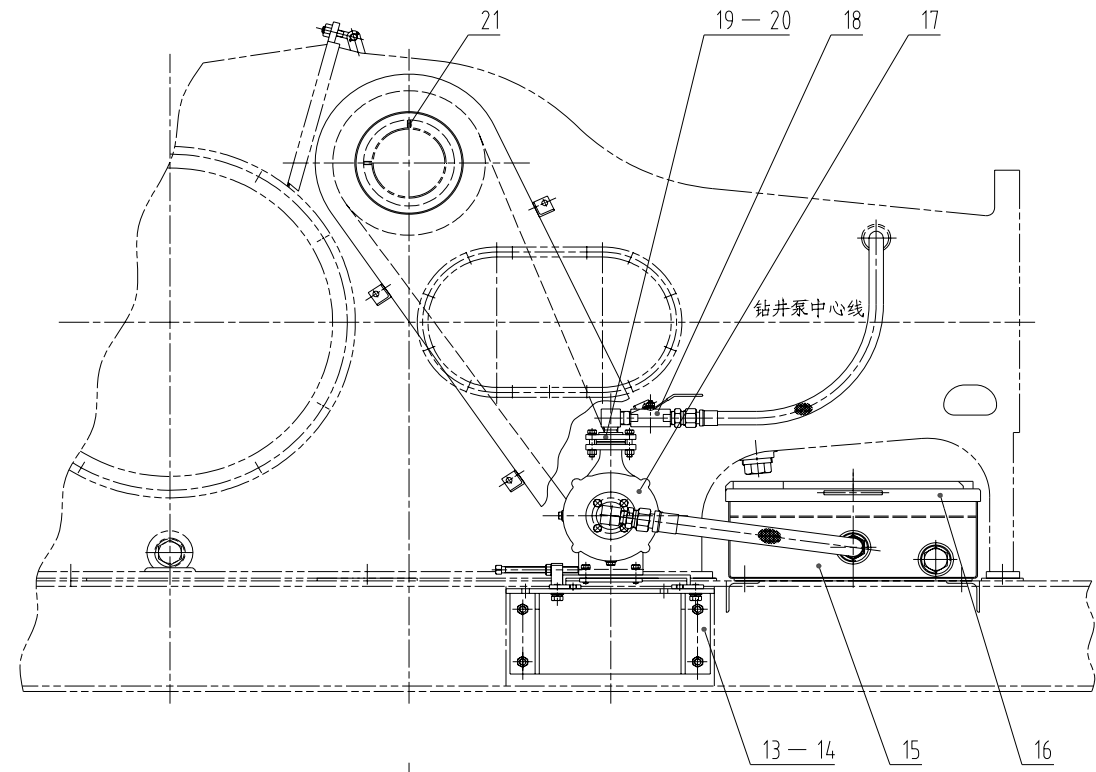
润滑原理图



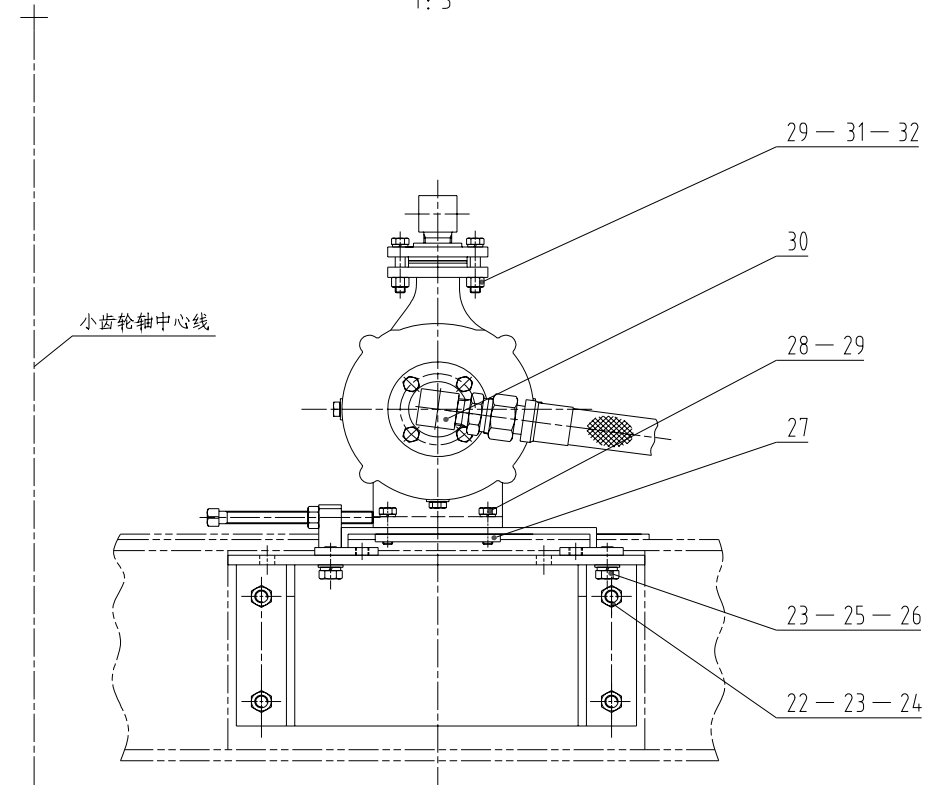
S.N	Drawing no.	Item	Qty.
1	NB800M.06.01.00	Support	1
2	NB800M.06.02.00	shim set	1
3		2Sgear oil pump (square key included)	1
4	Y60-Z	Dual scale pressure gauge : (9/16-16UN-2B) (0~1.6MPa/0~230psi)	1
5	NB800M.06.03	Inner screw connector : NPT1/4-9/16-16UN-2B	1
6	NB800M.06.04	Seal gasket	1
7	NB800M.06.05	90°pipe connector: 1/2-20UNF-2A-NPT1/4	9
8	GB/T1527-1997	Copper pipe: φ8×965	1
9	GB/T1527-1997	Copper pipe: φ8×1448	1
10	NB800M.06.06.00	≡ Pipe clip	2
11	GB/T1527-1997	Copper pipe: φ8×1700	1
12	GB/T1527-1997	Copper pipe: φ8×2057	1
13	NB800M.06.07	Nut: 1/2 -20UNF-2B	14
14	GB/T1527-1997	Copper pipe: φ12×1700	1
15	NB800M.06.08	90°pipe connector : 11/16-16UN-2A-NPT1/4	2
16	NB800M.06.09	Nut: 11/16-16UN-2B	10
17	NB800M.06.10	straight connector: 1/2-20UNF-2A	2
18	GB/T1527-1997	Copper pipe: φ8×698	2
19	NB800M.06.11.00	Pipe clip: φ12	6
20	NB800M.06.12.00	Pipe clip: φ8	4
21	NB800M.06.13	Straight connector: 11/16-16UN-2A	1
22	GB/T1527-1997	Copper pipe: φ12×927	1
23	GB/T1527-1997	Copper pipe: φ12×650	2
24	NB800M.06.14	Oil nozzle	2
25	ANSI/ASME B18.2.1-1996	bolt: 1/4-20×3/4	4
26	GB/T93-1987	washer: 6 (d1min=6.4)	4
27	NB800M.06.15	90°pipe connector : 11/16-16UN-2A-NPT3/8	4
28	GB/T1527-1997	Copper pipe: φ12×780	2
29	NB800M.06.16	Straight connector: 5/8-16UN-2A-NPT1/4	4
30	NB800M.06.17	Nut: 5/8-16UN-2B	10
31	GB/T1527-1997	Copper pipe: φ10×318	1

32	GB/T1527-1997	Copper pipe: $\phi 10 \times 152$	1
33	NB800M.06.18.00	Pipe clip: $\phi 10$	8
34	NB800M.06.19	90° pipe connector: 5/8-16UN-2A-NPT1/4	6
35	GB/T1527-1997	Copper pipe: $\phi 10 \times 700$	1
36	GB/T1527-1997	Copper pipe: $\phi 10 \times 890$	1
37	GB/T1527-1997	Copper pipe: $\phi 10 \times 755$	1
38	NB800M.06.20	plug socket (I)	1
39	NB800M.06.21	screw plug: NPT3/8	1
40	GB/T1527-1997	Copper pipe: $\phi 10 \times 184$	1
41	GB/T1527-1997	Copper pipe: $\phi 10 \times 508$	1
42	GB/T1527-1997	Copper pipe: $\phi 10 \times 610$	1
43	GB/T1527-1997	Copper pipe: $\phi 10 \times 365$	1
44	GB/T1527-1997	Copper pipe: $\phi 10 \times 630$	1
45	NB800M.06.22	screw plug: NPT1/4	4
46	NB800M.06.23.00	Filter assembly	1
47	NB800M.06.24	Straight connector : 15/16-16UN-2A-NPT1/2	2
48	NB800M.06.25	Nut: 15/16-16UN-2B	4
49	GB/T1527-1997	Copper pipe: $\phi 16 \times 330$	1
50	GB/T1527-1997	Copper pipe: $\phi 16 \times 640$	1
51	NB800M.06.26	plug socket (II)	1
52	NB800M.06.27	Lower plate	4
53	NB800M.06.28	Straight connector: 1/2-20UNF-2A-NPT1/4	1
54	GB/T1527-1997	Copper pipe: $\phi 8 \times 340$	1
55	YYFJ-L20	Relief valve	1
56	NB800M.06.29	90° pipe connector : 15/16-16UN-2A-NPT1/2	2
57	ASMEB18.3-2002	Bolt: 5/16-18 \times 1 9/16	12
58	GB/T93-1987	washer: 8	4
59	NB800M.06.30.00	Double pipe clip: $\phi 8$	3
60	NB800M.06.31.00	gear assembly, oil pump	1
61	TS1609 或 TS1680	anaerobic adhesive for cylindrical part	1

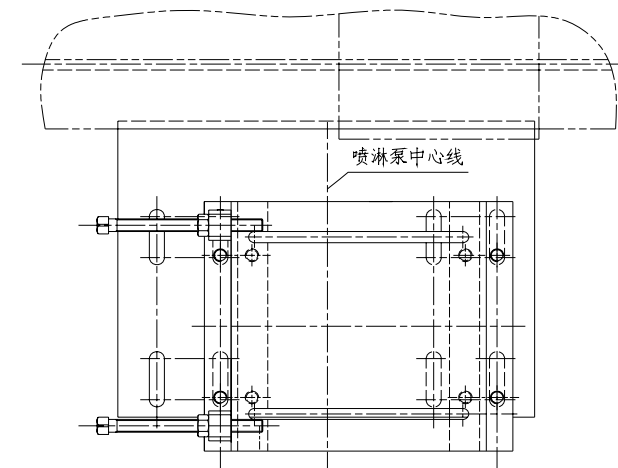
7、NB800M.08.00 Liner spraying assembly



喷淋泵与支座总成联接结构放大图
1:3



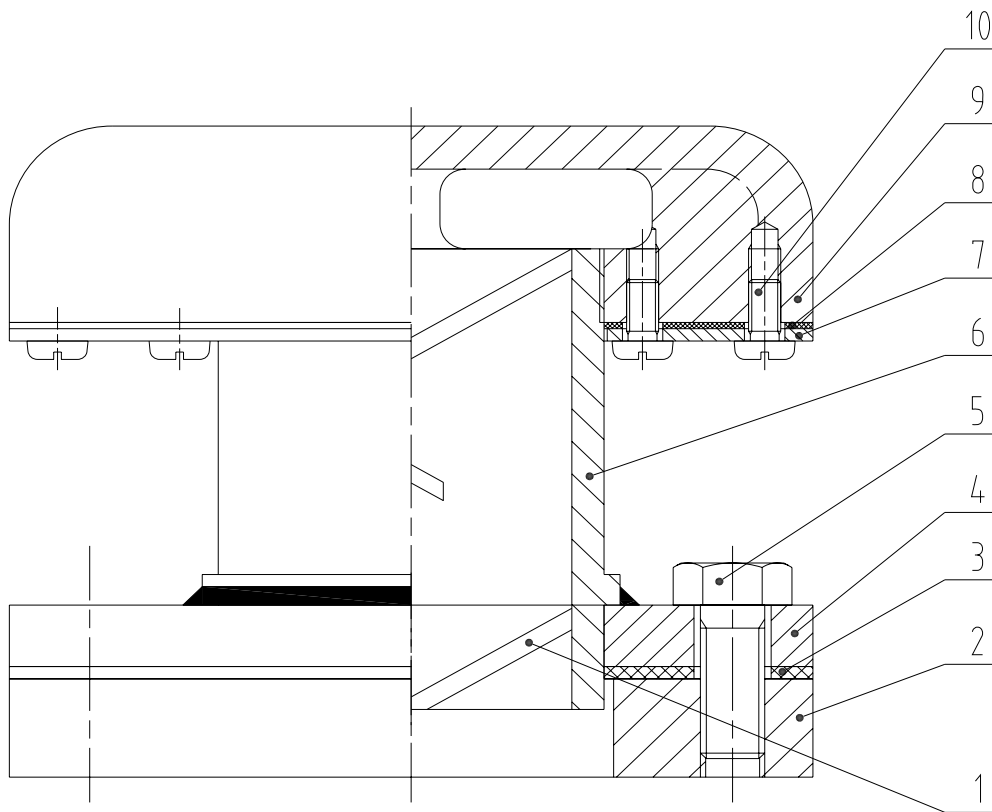
支座总成与支架联接结构放大图
1:3



S.N	Drawing no.	Item	Qty.
1	NB800M.08.01.00	Shield	1
2	NB800M.08.01.00A	Shield	1
3	NB800M.08.02	Belt pulley	1
4	GB/T1171-1996	V belt: A2800	2
5	NB800M.08.03.00	Support assembly	1
6	NB800M.08.03.00A	Support assembly	1
7	NB800M.08.04	Connector: NPT1-1 5/8-12UNF-2A	1
8	NB800M.08.05	Short connector: NPT1	1
9	NB800M.08.06	Connector: NPT1-1 5/16-12UNF-2A	1
10		Hose assembly : C31.5 I -950 (The connection screw on both ends are 1 5/8-12UNF-2B)	1
11		Hose assembly: C25 I -1500 (The connection screw on both ends are 1 5/16-12UNF-2B)	1
12	NB800M.08.07	Connector: NPT2 1/2-1 5/8-12UNF-2A	1
13	NB800M.08.08.00	Support	1
14	NB800M.08.08.00A	Support	1
15	NB800M.08.09.00	Water tank	1
16	NB800M.08.10.00	Tank cover	1
17	32SB180J (32PL)	centrifugal spray pump (West petroleum or Baoji)	1
18	Q11F-16	Inner screw ball valve: NPT1	1
19	NB800M.08.11	Flange: NPT1	2
20	NB800M.08.12	Washer	2
21	ANSI/ASME B18.6.2-1998	Bolt: 5/16-18×1	2
22	ANSI/ASME B18.2.1-1996	bolt: 5/8-11×2	4
23	GB/T93-1987	washer: 16	8
24	ANSI/ASME B18.2.2-1987 (1999)	Nut: 5/8-11	4
25	ANSI/ASME B18.2.1-1996	bolt: 5/8-11×1 1/4	4
26	GB/T95-2002	washer: 16	4
27	NB800M.08.13	Connection plate	2
28	ANSI/ASME B18.2.1-1996	bolt: 1/2-13×1 1/2	4

29	GB/T93-1987	washer: 14	12
30	NB800M.08.14	90°elbow: NPT1	2
31	ANSI/ASME B18.2.1-1996	bolt: 1/2-13×2 3/8	8
32	ANSI/ASME B18.2.2-1987 (R1999)	Nut: 1/2-13	8

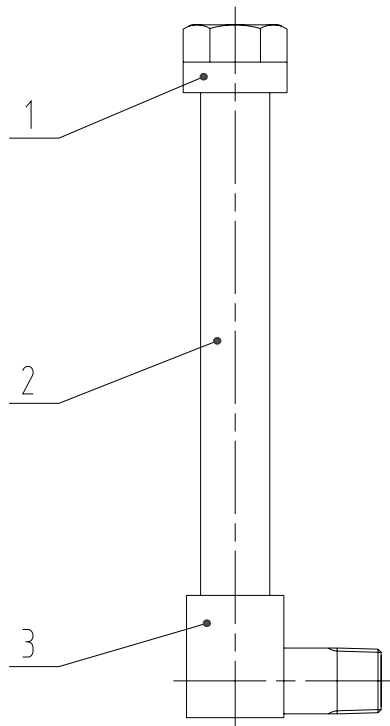
8、NB800M.10.00 Breather cap



S.N	Drawing no.	Item	Qty.
1	NB800M.10.01	Baffle plate	3
2	NB800M.10.02	Connection plate (I)	1
3	NB800M.10.03	Gasket	1
4	NB800M.10.04	Connection plate (II)	1
5	ANSI/ASME B18.2.1-1996	bolt: 3/8-16×1	4
6	NB800M.10.05	Connector	1
7	NB800M.10.06	Press plate for filter screen	1
8	NB800M.10.07	Copper mesh	1

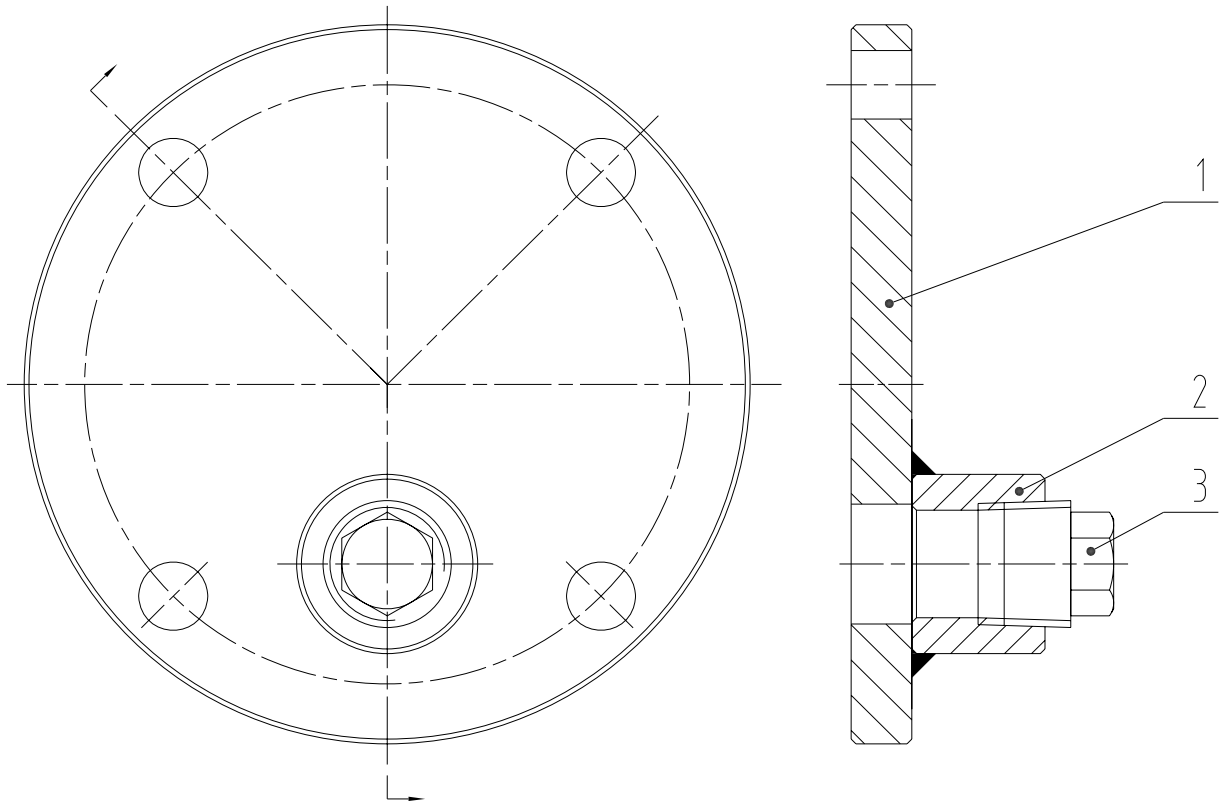
9	NB800M.10.08	Upper cover	1
10	ANSI/ASME B18.6.3-2003	Bolt: 10 (0.190) 0-24×3/8	8

9、NB800M.15.00 Oil level gauge assembly



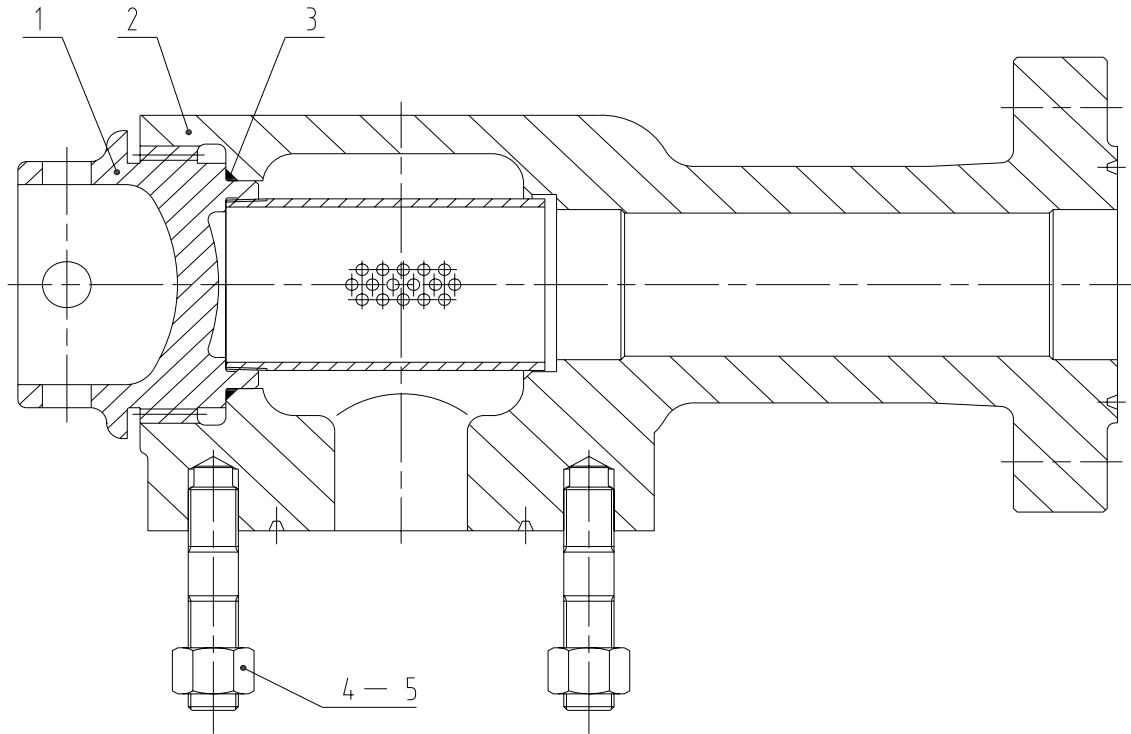
S.N	Drawing no.	Item	Qty.
1	NB800M.15.01.00	dipstick	1
2	NB800M.15.02	Short connector: NPT1/2	1
3	NB800M.15.03	Elbow: NPT1/2	1

10、NB800M.19.00 Clean out cover



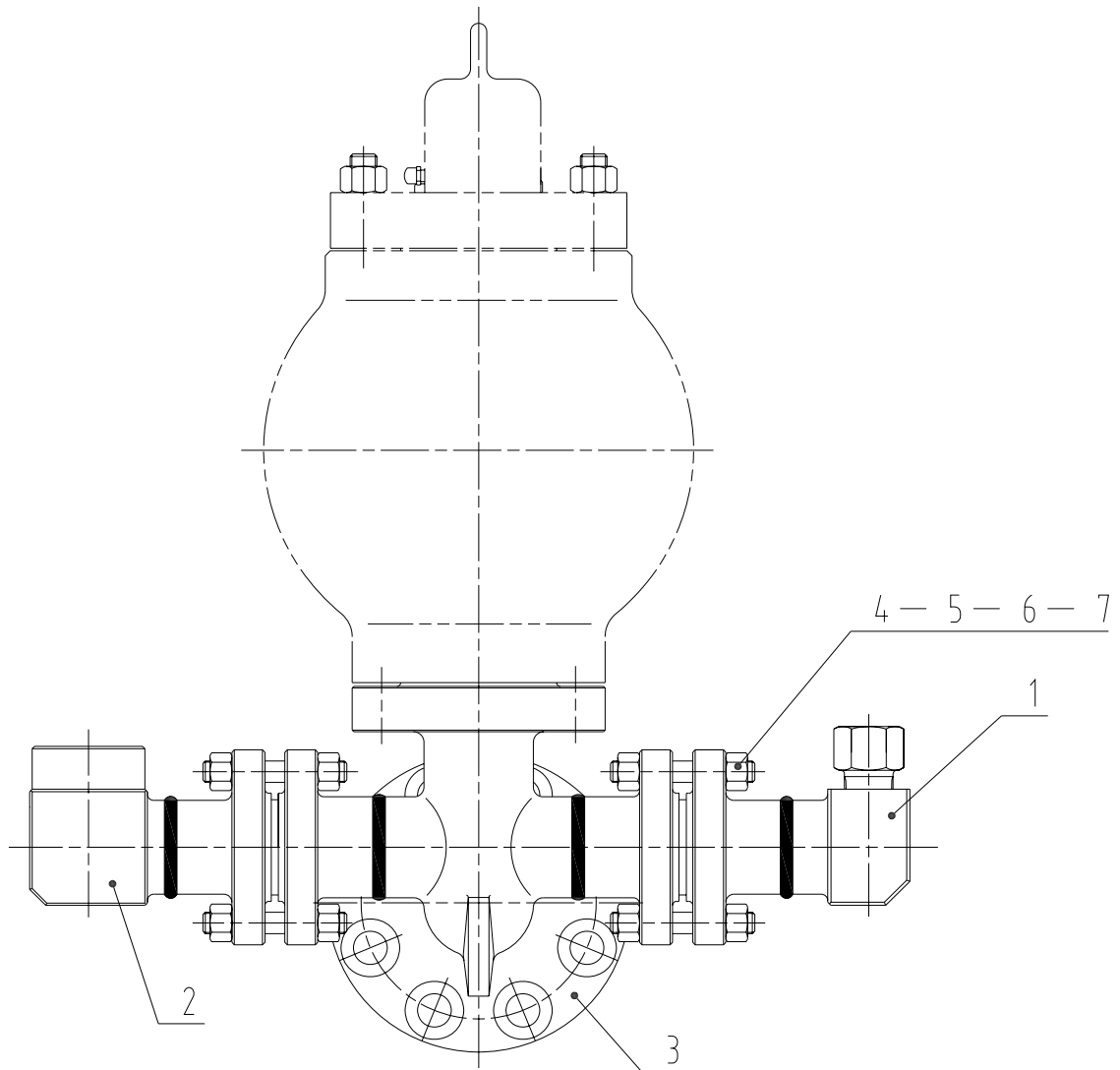
S.N	Drawing no.	Item	Qty.
1		Cover plate assembly: $\phi 152.4 \times 12.7$	1
2	NB800M.19.01	Connector: NPT3/4	1
3	NB800M.19.02	screw plug: NPT3/4	1

11、NB800M.22.00 Draining filter assembly



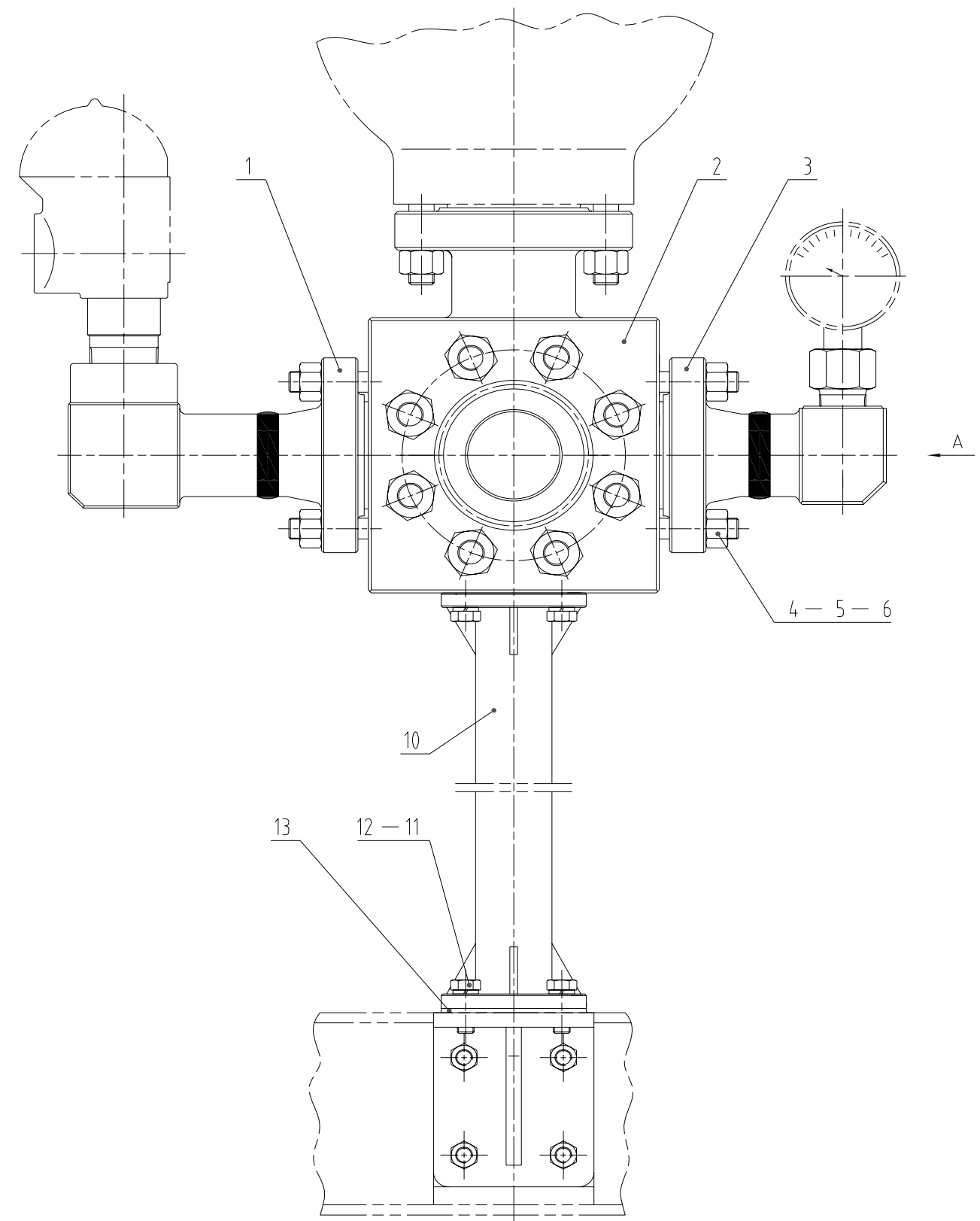
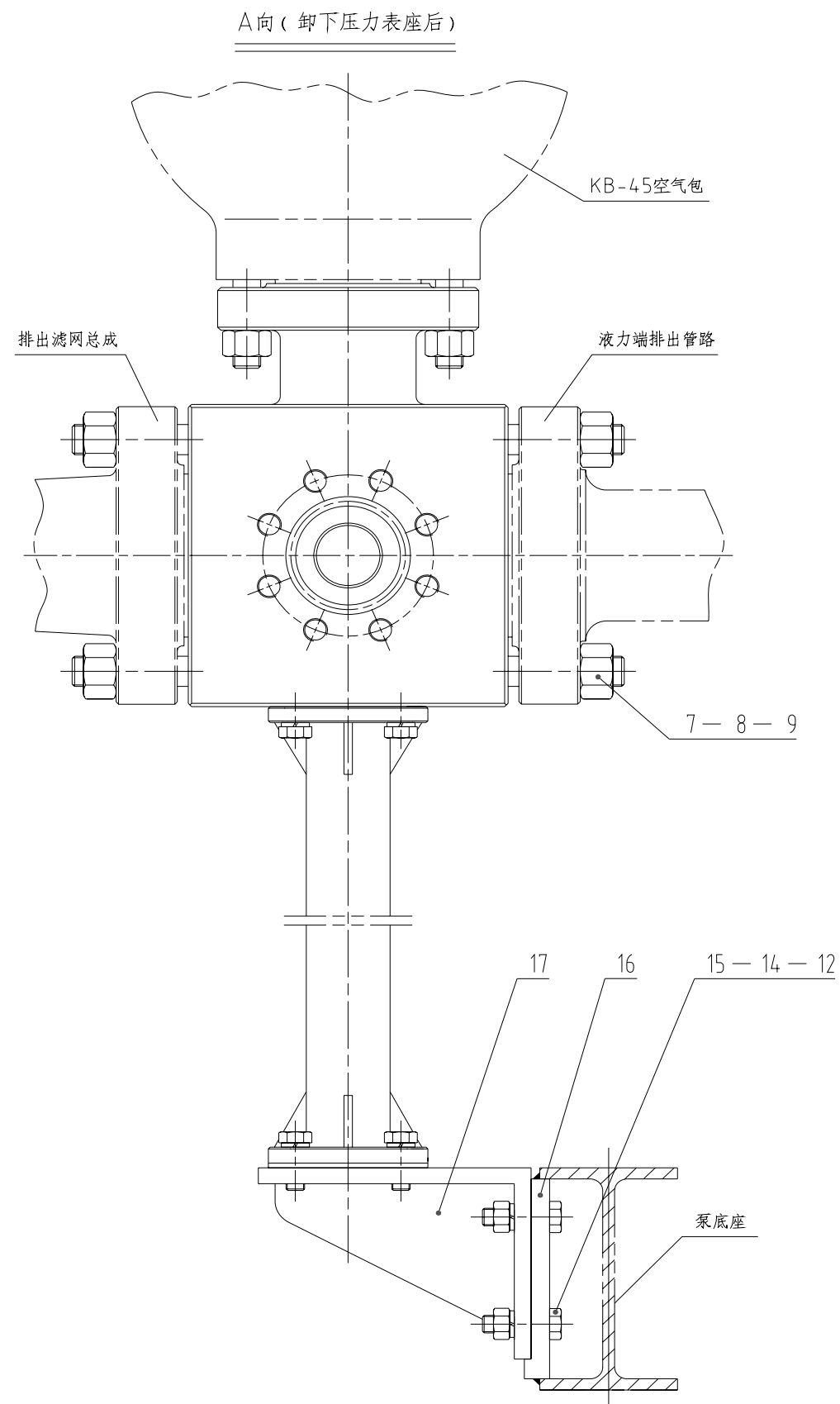
S.N	Drawing no.	Item	Qty.
1	NB800M.22.01.00	Filter screen assembly	1
2	NB800M.22.02	Shell	1
3	GB/T3452.1-2005	O RING: 165×7-G-S	1
4	NB800M.22.03	Double ends bolt: 1 1/2-8UN (12UNF) -2A×128	8
5	NB800M.22.04	Nut: 1 1/2-8UN-2B (SPL)	8

12、NB800M.24.00 Elbow assembly



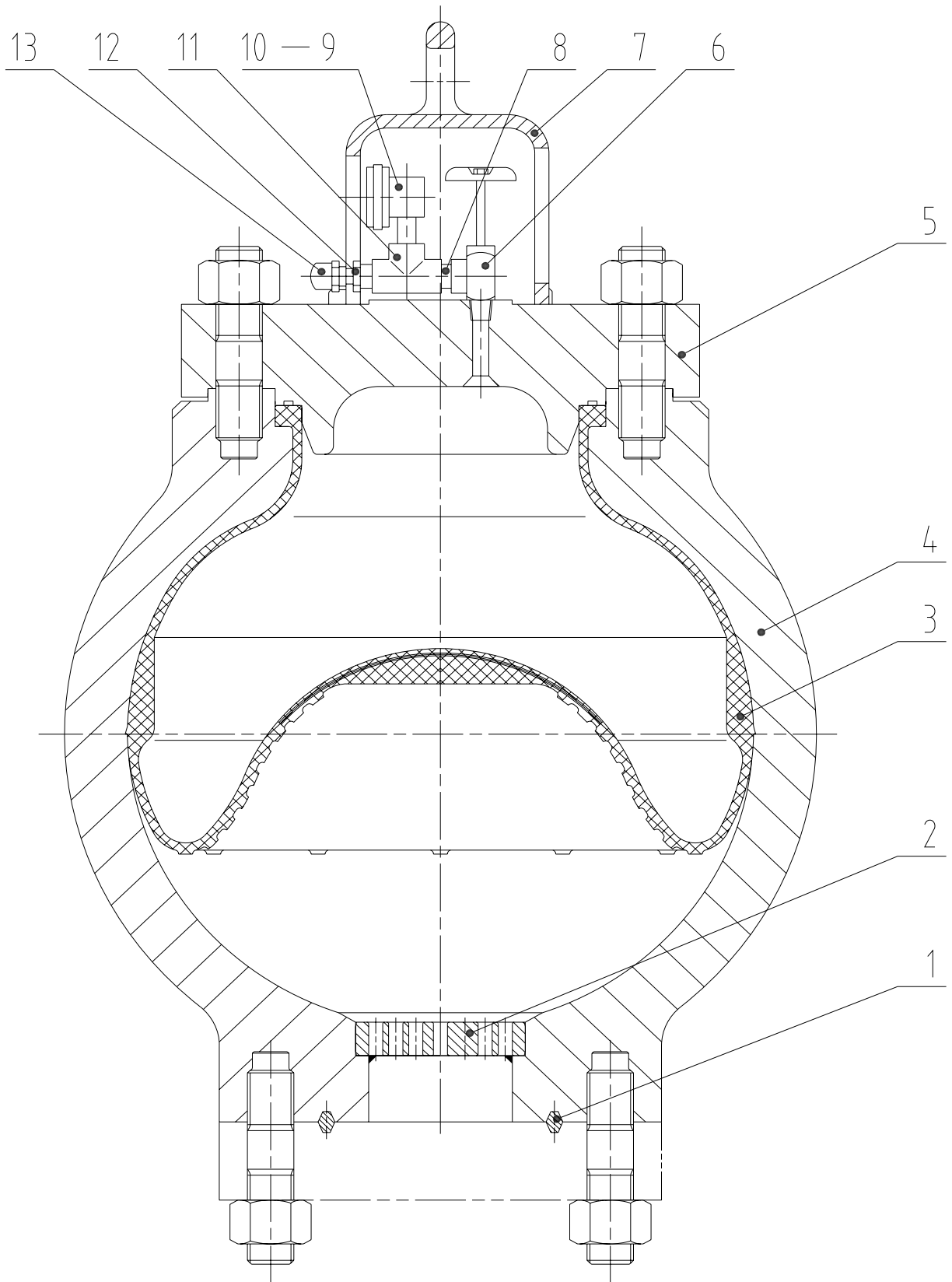
S.N	Drawing no.	Item	Qty.
1	NB800M.24.01.00	Seat, pressure gauge	1
2	NB800M.24.02.00	Safety valve seat	1
3	NB800M.24.03.00	Discharging cross	1
4	NB800M.24.04	Double ends bolt: 1 1/16-8UN-2A×180	16
5	NB800M.24.05	Thickened nut: 1 1/16-8UN-2B (SPL)	32
6	NB800M.24.06	Gasket ring: R27	2
7	243	anaerobic adhesive for thread locking and sealing	1

13、NB800M.24.00A Discharge five-way pipe assembly



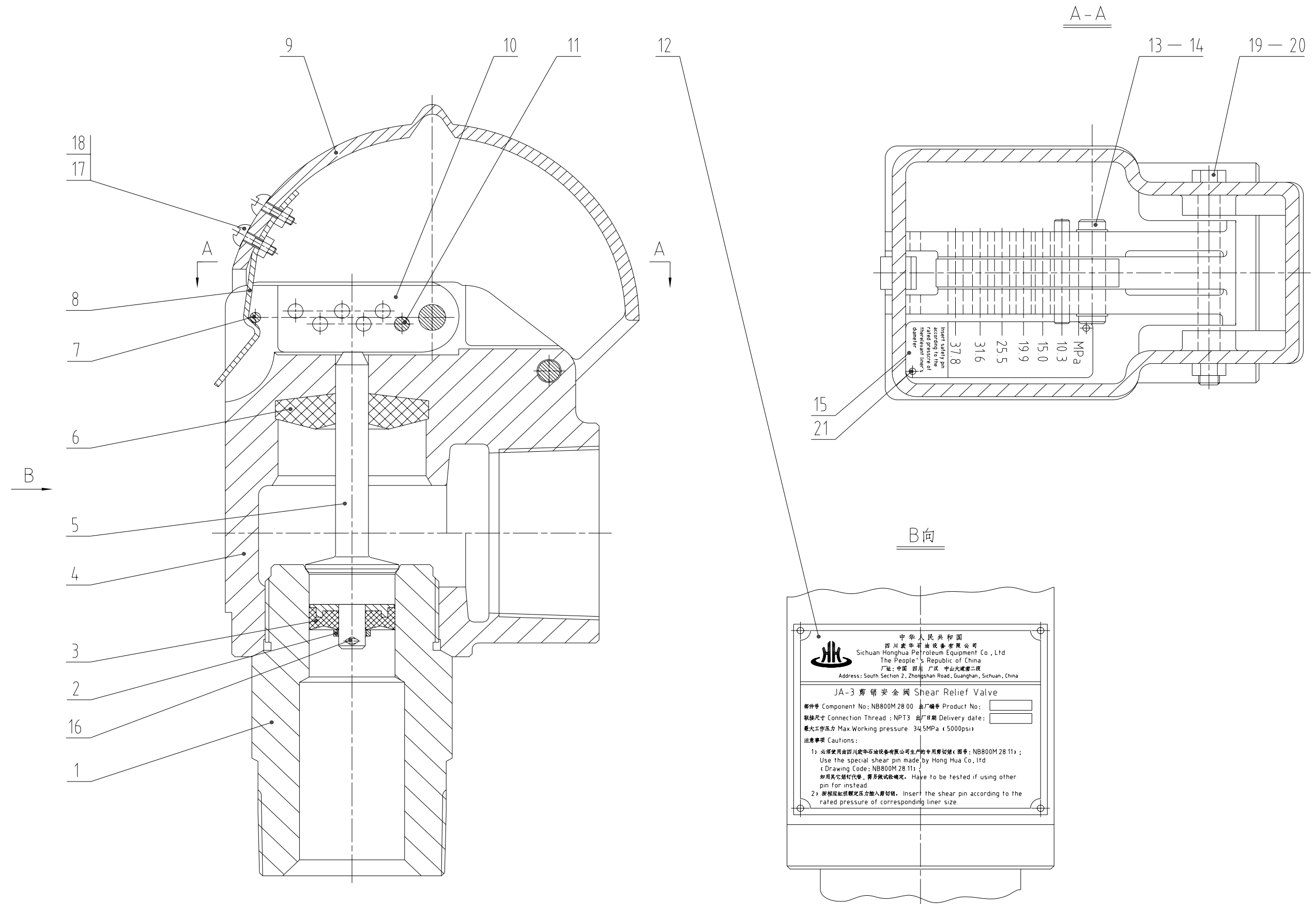
S.N	Drawing no.	Item	Qty.
1	NB800M.24.01.00A	Seat, safety valve	1
2	NB800M.24.02A	Discharge five-way pipe	1
3	NB800M.24.03.00A	Seat, pressure gauge	1
4	NB800M.24.04A	Gasket ring: R35	2
5	NB800M.24.05A	Double ends bolt: 1 1/8-8UN (12UNF) -2A×90	16
6	NB800M.24.06A	Nut: 1 1/8-8UN-2B (SPL)	16
7	NB800M.24.07A	Double ends bolt: 1 1/2-8UN (12UNF) -2A×130	16
8	NB800M.24.08A	Nut: 1 1/2-8UN-2B (SPL)	16
9	NB800M.24.09A	Gasket ring: R44	1
10	NB800M.24.10.00A	Support bracket	1
11	ANSI/ASME B18.2.1-1996	bolt: 7/8-9×2 3/8	8
12	GB/T93-1987	washer: 22	12
13	NB800M.24.11A	Gasket	1
14	ANSI/ASME B18.2.1-1996	bolt: 7/8-9×3 1/8	4
15	ANSI/ASME B18.2.2 -1987 (R1999)	Nut: 7/8-9	4
16	NB800M.24.12A	Connection plate	1
17	NB800M.24.13.00A	Support	1

14、NB800M.27.00 KB-45 Pulsation Dampener



S.N	Drawing no.	Item	Qty.
1	NB800M.27.01	Gasket ring: R39	1
2	NB800M.27.02	Base plug	1
3	NB800M.27.03.00	Air rubber	1
4	NB800M.27.04.00	Shell assembly	1
5	NB800M.27.05	Cover	1
6	JZR3-L8	Check valve (Xinhua hydraulic device, Fenghua)	1
7	NB800M.27.06.00	Cover, pressure gauge	1
8	NB800M.27.07	Connector: NPT1/4	1
9	Y-60	Double scale shock proof pressure gauge: 0~25MPa (0~3630psi)	1
10	NB800M.27.08	washer	1
11	NB800M.27.09	T-joint: NPT1/4	1
12	NB800M.27.10.00	Air discharge valve	1
13	NB800M.27.11.00	Suction hose assembly, pulsation dampener	1

15、NB800M.28.00 JA-3 shear pin safety valve



S.N	Drawing no.	Item	Qty.
1	NB800M.28.01	Connector	1
2	NB800M.28.02	Retainer ring	1
3	NB800M.28.03.00	Piston assembly	1
4	NB800M.28.04	Valve body	1
5	NB800M.28.05	Piston rod	1
6	NB800M.28.06	Buffer mat	1
7	NB800M.28.07	Elastic cylinder pin	1
8	NB800M.28.08	Lock spring	1
9	NB800M.28.09	Shield	1
10	NB800M.28.10	Shear pin plate	1
11	NB800M.28.11	Shear pin	1
12	NB800M.28.12	Instruction plate	1
13	NB800M.28.13	Pin shaft	1
14	NB800M.28.14	Steel wire retainer ring	2
15	NB800M.28.15	Name plate	1
16	GB/T91-2000	Pin: 4×25	1
17	ANSI/ASME B18.6.3-2003	Bolt: 8 (0.164) -32×5/8	2
18	ANSI/ASME B18.6.3-2003	Nut: 8 (0.164) -32	2
19	ANSI/ASME B18.2.1-1996	bolt: 3/8-16×4 3/8	1
20	ANSI/ASME B18.2.2-1987(R1999)	Nut: 3/8-16	1
21	ANSI/ASME B18.6.3-2003	Bolt: 5 (0.125) -40×5/16	6